



[Home](#)
[Aims & Scopes](#)
[Archives](#)
[Submission](#)
[Membership](#)
[Editorial Board](#)
[Conferences](#)
[Contact Us](#)

Geotechnique

Survey

Construction

Analyses

Environment

Scopus

EBSCO

CENGAGE  
Learning



GIF  
GLOBAL IMPACT FACTOR

## Welcome to Geomate Journal (ESCI)

News updates

Memorial 1st issue published on 2011.11.11 (**OPEN ACCESS**)

Paper DOI: Paste paper title in the "Metadata Search" in <http://www.crossref.org/>

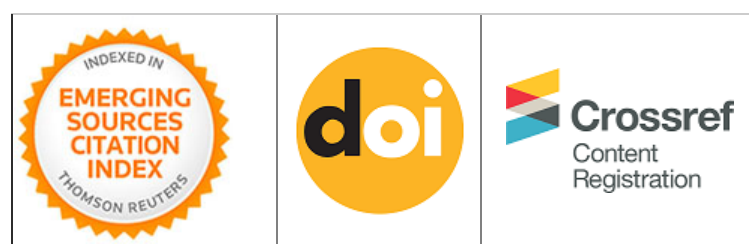
### Introduction:

- The "International Journal of GEOMATE" is a Scientific Journal of the GEOMATE International Society that encompasses a broad area in Geotechnique, Construction Materials and Environment.
- Special Issue: The journal includes papers on Science, Engineering and Environment under the category of special issue.
- The key objective of this journal is to promote interdisciplinary research from various regions of the globe. Geomate meaning as GEO-MATE indicating earth friend or nature friend.
- The editorial board of the journal is comprised of extensively qualified researchers, academicians, scientists from Japan and other countries of the world.
- It is peer-reviewed journal that is published monthly (2011-2015 quarterly). All articles published in this journal are available on line.
- Contributors may download the manuscript preparation template for submitting paper or contact to the Editors-in-Chief [[editor@geomatejournal.com](mailto:editor@geomatejournal.com)].

**Indexed in:** SCOPUS, Thomson Reuters Web of Science (ESCI), Crossref, DOI, EBSCO, Gale Cengage Learning, Ulrichwebs, Global Impact Factor (GIF), etc.

SCOPUS Journal list: <https://www.elsevier.com/solutions/scopus/content>

ISI Master Journal List: <http://ip-science.thomsonreuters.com/mjl/>



[Click on the banner below for next conferences:](#)

Publication Ethics	2012: 0.714
Review Policy	Paper Acceptance Rate:
Content List	2015: 35.28%
Copyright, Template (Form 1,2,3)	2014: 37.5%
Discussion	2013: 38.71%
Erratum	
Evaluation Form	
Galley Proof Submission	
Impact Factor by SCOPUS	
Payment	
Reviewer Application	
Revised Paper Submission	





## Aims & Scopes

The journal aims to become an efficient mean of publishing and distributing high quality information from the researchers, scientists and engineers. The main scopes are as follows:

- |   |   |
|---|---|
| <ul style="list-style-type: none"> <li>• Advances in Composite Materials</li> <li>• Computational Mechanics</li> <li>• Foundation and Retaining Walls</li> <li>• Slope Stability</li> <li>• Soil Dynamics</li> <li>• Soil-Structure Interaction</li> <li>• Pavement Technology</li> <li>• Tunnels and Anchors</li> <li>• Site Investigation and Rehabilitation</li> </ul> | <ul style="list-style-type: none"> <li>• Ecology and Land Development</li> <li>• Water Resources Planning</li> <li>• Environmental Management</li> <li>• Public Health and Rehabilitation</li> <li>• Earthquake and Tsunami Issues</li> <li>• Safety and Reliability</li> <li>• Geo-Hazard Mitigation</li> <li>• Case History and Practical Experience</li> <li>• Others</li> </ul> |
|---|---|

The scope of special issues are as follows:

Engineering	Science	Environment
<ul style="list-style-type: none"> <li>• Environmental Engineering</li> <li>• Chemical Engineering</li> <li>• Civil and Structural Engineering</li> <li>• Computer Software Eng.</li> <li>• Electrical and Electronic Eng.</li> <li>• Energy and Thermal Eng.</li> <li>• Aerospace Engineering</li> <li>• Agricultural Engineering</li> <li>• Biological Engineering and Sciences</li> <li>• Biological Systems Engineering</li> <li>• Biomedical and Genetic Engineering</li> <li>• Bioprocess and Food Engineering</li> <li>• Geotechnical Engineering</li> <li>• Industrial and Process Engineering</li> <li>• Manufacturing Engineering</li> <li>• Mechanical and Vehicle Eng.</li> <li>• Materials and Nano Eng.</li> <li>• Nuclear Engineering</li> <li>• Petroleum and Power Eng.</li> <li>• Forest Industry Eng.</li> </ul>	<ul style="list-style-type: none"> <li>• Environmental Science</li> <li>• Chemistry and Chemical Sci.</li> <li>• Fisheries and Aquaculture Sciences</li> <li>• Astronomy and Space Sci.</li> <li>• Atmospheric Sciences</li> <li>• Botany and Biological Sciences</li> <li>• •Genetics and Bacteriolog</li> <li>• Forestry Sciences</li> <li>• Geological Sciences</li> <li>• Materials Science and Mineralogy</li> <li>• Statistics and Mathematics</li> <li>• Microbiology and Medical Sciences</li> <li>• Meteorology and Palaeo Ecology</li> <li>• Pharmacology</li> <li>• Physics and Physical Sci.</li> <li>• Plant Sciences and Systems Biology</li> <li>• Psychology and Systems Biology</li> <li>• Zoology and Veterinary Sciences</li> </ul>	<ul style="list-style-type: none"> <li>• Environmental Technology</li> <li>• Recycle Solid Wastes</li> <li>• Environmental dynamics</li> <li>• Meteorology and Hydrology</li> <li>• Atmospheric and Geophysics</li> <li>• Physical oceanography</li> <li>• Bio-engineering</li> <li>• Environmental sustainability</li> <li>• Resource management</li> <li>• Modelling and decision support tools</li> <li>• Institutional development</li> <li>• Suspended and biological processes</li> <li>• Anaerobic and Process modelling</li> <li>• Modelling and numerical prediction</li> <li>• Interaction between pollutants</li> <li>• Water treatment residuals</li> <li>• Quality of drinking water</li> <li>• Distribution systems on potable water</li> <li>• Reuse of reclaimed waters</li> </ul>

[Publication Ethics](#)[Review Policy](#)[Content List](#)[Copyright, Template \(Form 1,2,3\)](#)[Discussion](#)[Erratum](#)[Evaluation Form](#)[Galley Proof Submission](#)[Impact Factor by SCOPUS](#)[Payment](#)[Reviewer Application](#)[Revised Paper Submission](#)



## Editorial Board

### Honorary Editor

**E/Prof. Dr. Shoji Inoue,**  
Mie University, Japan

### Editor-in-Chief:

**Prof. Dr. Zakaria Hossain,**  
Mie University, Japan

### Assistant Chief Editor:

**Dr. Jim Shiao,**  
University of Southern Queensland, Australia

### Associate Editors:

<b>Prof. Dr. Fumio Tatsuoka,</b> Tokyo University of Science, Japan	<b>Prof. Dr. Sai Vanapalli,</b> University of Ottawa, Canada	<b>Prof. Dr. Ian Jefferson,</b> University of Birmingham, United Kingdom
<b>Prof. Dr. Mounir Bouassida,</b> National School of Engineering of Tunis	<b>Prof. Dr. Bujang B.K. Huat,</b> University Putra Malaysia, Malaysia	<b>Prof. Dr. Nemy Banthia,</b> University of British Columbia, Canada
<b>Prof. Dr. Toshinori Sakai,</b> Mie University, Japan	<b>Prof. Dr. A.S.M. Abdul Awal,</b> Universiti Tun Hussein Onn Malaysia (UTHM), Malaysia	<b>Prof. Dr. Jing-Cai Jiang,</b> University of Tokushima, Japan
<b>Prof. Dr. Lilia Robles Austriaco,</b> Angles University Foundation, Philippines	<b>Prof. Dr. Muhammad Ibn Ibrahimy,</b> International Islamic University, Malaysia	<b>Prof. Dr. Shamsul I. Chowdhury,</b> Roosevelt University, USA
<b>Prof. Dr. Isabel Pinto,</b> University of Coimbra, Portugal	<b>Prof. Dr. Mark Jaksa,</b> University of Adelaide, Australia	<b>Prof. Dr. Kaneco Satoshi,</b> Mie University, Japan
<b>Prof. Dr. Mohammad Shariful Islam,</b> BUET, Bangladesh	<b>Prof. Dr. Ranjith Pathegama Gamage,</b> Monash University, Australia	<b>Prof. Dr. Kingshuk Roy,</b> Nihon University, Japan
<b>Prof. Dr. Md. Shahin Hossain,</b> Islamic University of Technology, Bangladesh	<b>Prof. Dr. Pedro Arrua,</b> Universidad Tecnológica Nacional, Argentina	<b>Prof. Dr. Miguel A. Pando,</b> University of North Carolina, USA
<b>Prof. Dr. Suksun Horpibulsuk,</b> Suranaree University of Technology, Thailand	<b>Prof. Dr. Musharraf Zaman,</b> University of Oklahoma, USA	<b>Prof. Dr. Rafiqul Tarefder,</b> University of New Mexico, USA

### Sub-editors

<b>A/Prof. Dr. Nagaratnam Sivakugan,</b> James Cook University, Australia	<b>Dr. Ivan Gratchev,</b> Griffith University, Australia	<b>A/Prof. Srimala Sreekantan,</b> University Sains Malaysia
<b>Prof. Dr. Basuony El-Garhy,</b> University of Tabuk, KSA	<b>A/Prof. Ali Hassan Ali Mahfouz,</b> Suez Canal University, Egypt	<b>Dr. Noor Ul Hassan Zardari,</b> Universiti Teknologi Malaysia, Malaysia
<b>Dr. Zeki Candan,</b> Istanbul University,	<b>Dr. Amimul Ahsan,</b> UPM, Malaysia	<b>A/Prof. Dr. John Victor Smith,</b> RMIT

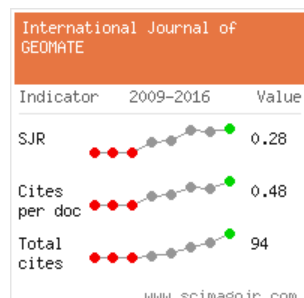
[Publication Ethics](#)  
[Review Policy](#)  
[Content List](#)  
[Copyright, Template \(Form 1,2,3\)](#)  
[Discussion](#)  
[Erratum](#)  
[Evaluation Form](#)  
[Galley Proof Submission](#)  
[Impact Factor by SCOPUS](#)  
[Payment](#)  
[Reviewer Application](#)  
[Revised Paper Submission](#)

### Editorial Assistants/Reviewers

<b>Mr. P.L.P. Wasantha</b> , Monash University, Australia	<b>Mr. Mohsen Hajihassani</b> , Universiti Teknologi Malaysia, Malaysia	<b>Dr. Sanjay Jha</b> , National Taiwan University
<b>Dr. Navid Khayat</b> , Islamic Azad University, Iran	<b>Mr. Deepak Raj Bhat</b> , Ehime University, Japan	<b>Dr. Richard P. Ray</b> , Steven Szechenyi University, Hungary
<b>Mr. Ahmed Hashim</b> , University of Babylon, Iraq	<b>Dr. Reza Mohammadpour Ghalati</b> , Universiti Sains Malaysia	<b>Dr. Anna Maria Pellegrino</b> , University of Ferrara, Italy
<b>Dr. Janaka Jagath Kumara</b> , Tokyo University of Science, Japan	<b>Dr. Rusnardi Rahmat</b> , State University of Padang, Indonesia	<b>A/Prof. Dr. Ahmad RIFA'I</b> , Universitas Gadjah Mada, Indonesia
<b>Dr. Aseel Hadi</b> , Universitas Gadjah Mada, Iraq	<b>Dr. Hasibun Naher</b> , BRAC University, Bangladesh	<b>A/Prof. Engr. Shailesh Kumar Jha</b> , Indian Institute of Technology, India
<b>Dr. Bo Zhang</b> , University of Oklahoma, USA.	<b>A/Prof. Vo Quang Minh</b> , Can Tho University, Vietnam	<b>Dr. Mohd Hairry Ibrahim</b> , Sultan Idris Education University, Malaysia
<b>Engr. Saeed Nemati</b> , Western Sydney University, Australia	<b>Dr. Mohammad Rezanian</b> , University of Nottingham, UK	<b>A/Prof. Yuk Feng Huang</b> , Universiti Tunku Abdul Rahman, Malaysia
<b>Engr. Gholamreza Darvishi</b> , Mazandab Env. Eng. Res. Center, Iran	<b>Dr. Farshad G. Kootenaei</b> , Mazandab Envi. Eng. Res. Center, Iran	<b>A/Prof. Subramaniam P.</b> , VIT University, Chennai, India
<b>DR. Md Fauzi Ahmad</b> , Universiti Tun Hussein Onn Malaysia	<b>A/Prof. Abdul Naser Abdul Ghani</b> , Universiti Sains Malaysia	<b>Prof. Dr. Abdelnaser</b> , Universiti Utara Malaysia
<b>Dr. Choo Chung Siung</b> , Swinburne University of Technology, Malaysia	<b>Dr. Mohd Hairry Ibrahim</b> , Sultan Idris Education University, Malaysia	<b>Prof. Menani Mohamed Redha</b> , University of Batna 2, Algeria
<b>Dr. Yogendra Tandel</b> , GIDC Degree Engineering College, India	<b>Dr. Paresh Vasantlal Dalal</b> , Shri V. S. Naik Arts, Commerce and Science College, India	<b>Dr Adnan Zainorabidin</b> , Universiti Tun Hussein Onn Malaysia
<b>A/Prof. Waseim Ragab Azzam</b> , Tanta University, Egypt	<b>Dr. Sayang Mohd Deni</b> , Universiti Teknologi MARA, Malaysia	<b>A/Prof. Matallah</b> , University of Tlemcen, Algeria
<b>Dr. Hailei Kou</b> , Nanyang Technological University, Singapore	<b>A/Prof. Ali Habeeb</b> , University of Babylon, Iraq	<b>Engr. Ali</b> , University Malaysia Pahang, Malaysia
<b>A/Prof. Bashar Tarawneh</b> , The University of Jordan	<b>Prof. Valeriy Perminov</b> , Tomsk Polytechnic University, Russia	<b>Prof. Usman Sumo Friend Tambunan</b> , University of Indonesia
<b>A/Prof. Jitender Grover</b> , Maharishi Markandeshwar University, India	<b>Prof. Ibrahim Said Rahim</b> , National Research Centre, Cairo, Egypt	<b>Dr. Kazakis Nerantzis</b> , Aristotle University of Thessaloniki, Greece
<b>A/Prof. Hamed Farshbaf Aghajani</b> , Azarbaijan Shahid Madani University, Iran	<b>Dr. Heriansyah Putra</b> , Universitas Jambi, Indonesia	<b>Dr. Arash Rostami</b> , Islamic Azad University, Iran
<b>Dr. Pushan Kumar Dutta</b> , Rajiv Gandhi Memorial College of Engineering and Management, India	<b>A/Prof. Vijayasekhar Jaliparthi</b> , GITAM University, Hyderabad, India	<b>A/Prof. Kamrul Islam</b> , Military Institute of Science and Technology, Bangladesh
<b>Dr. Muhammad Zubair Khan</b> , Federal Urdu University of Arts, Science & Technology, Pakistan	<b>Dr. Lakshmi Vara Prasad</b> , National Institute of Technology, Silchar, India	<b>Prof. Mahmood Shafaei Bejestan</b> , Shahid Chamran University, Ahvaz, Iran
<b>A/Prof. Rosilawati Zainol</b> , University of Malaya, Malaysia	<b>Engr. Nasser Najibi</b> , City University of New York, USA	<b>Engr. Ali Jihad Hamad</b> , Engineering Technical College of Mosul, Iraq
<b>A/Prof. Gautam Raj Jodh</b> , Priyadarshini Indira Gandhi College of Engineering, India	<b>A/Prof. R. S. Ajin</b> , GeoVin Solutions Pvt. Ltd., India	<b>A/Prof. Furqan Ahmad</b> , Dhofar University, Oman
<b>A/Prof. Amorn Chaiyasat</b> , Rajamangala University of Technology, Thailand	<b>Dr. Hassan</b> , Qatar University, Doha, Qatar	<b>A/Prof. Belagraa Larbi</b> , M'sila University, Algeria
<b>A/Prof. Aksara Putthividhya</b> , Chulalongkorn University, Thailand	<b>Dr. Fatima Zohra Tebbi</b> , Earth Sciences and Universe, Algeria	<b>Engr. Sodom Ball Reddy</b> , IITGuwahati, India
<b>Dr. Yogendra Tandel</b> , Government Engineering College, Dahod, India	<b>Dr. Chaoqi Zhu</b> , Ocean University of China, Qingdao City, China	<b>Engr. Ardi Gunardi</b> , Universitas Pasundan, Indonesia
<b>A/Prof. Abdul Hakam</b> , Andalas University, Indonesia	<b>Dr. Tanakorn Phoo-ngernkham</b> , Rajamangala University of Technology, Thailand	<b>Prof. SAAD</b> , Isra University, Amman, Jordan

[Home](#) [Aims & Scopes](#) [Archives](#) [Submission](#) [Membership](#) [Editorial Board](#) [Conferences](#) [Contact Us](#)

## Impact Factor by SCOPUS

[Publication Ethics](#)[Review Policy](#)[Content List](#)[Copyright, Template \(Form 1,2,3\)](#)[Discussion](#)[Erratum](#)[Evaluation Form](#)[Galley Proof Submission](#)[Impact Factor by SCOPUS](#)[Payment](#)[Reviewer Application](#)[Revised Paper Submission](#)

International Journal of GEOMATE

Scopus coverage years: from 2011 to Present

Publisher: GEOMATE International Society

ISSN: 2186-2982 E-ISSN: 2186-2990

Subject area:

Earth and Planetary Sciences: Geotechnical Engineering and Engineering Geology

Engineering: Building and Construction

Agricultural and Biological Sciences: Soil Science

Environmental Science: Environmental Engineering

[View all documents >](#) [Set document alert](#) [Journal Homepage](#)

Visit Scopus Journal Metrics ↗

CiteScore 2016 0.55 ⓘ

SJR 2016 0.277 ⓘ

SNIP 2016 1.458 ⓘ

CiteScore CiteScore rank & trend Scopus content coverage

CiteScore 2016 ▼ Calculated using data from 31 May, 2017

0.55 =  $\frac{\text{Citation Count 2016}}{\text{Documents 2013 - 2015}^*}$  =  $\frac{94 \text{ Citations} >}{171 \text{ Documents} >}$

\*CiteScore includes all available document types [View CiteScore methodology >](#) [CiteScore FAQ >](#)

CiteScoreTracker 2017 ⓘ Last updated on 24 April, 2018 Updated monthly

0.73 =  $\frac{\text{Citation Count 2017}}{\text{Documents 2014 - 2016}}$  =  $\frac{239 \text{ Citations to date} >}{327 \text{ Documents to date} >}$

Metrics displaying this icon are compiled according to Snowball Metrics ↗, a collaboration between industry and academia.

CiteScore rank ⓘ

Category	Rank	Percentile
Earth and Planetary Sciences	#90/167	46th
Geotechnical Engineering and Engineering Geology		
Engineering		
Building	#83/149	44th

[View CiteScore trends >](#)  
[Add CiteScore to your site ↗](#)

About Scopus

- What is Scopus
- Content coverage
- Scopus blog
- Scopus API
- Privacy matters

Language

- 日本語に切り替える
- 切换到简体中文
- 切换到繁体中文
- Русский язык

Customer Service

- Help
- Contact us



## Articles (2018 / volume 15 / issue 48)

### 1. SHEAR STRENGTH ENHANCEMENT OF COMPACTED SOILS USING HIGH-CALCIUM FLY ASH-BASED GEOPOLYMER

*Soe Thiha, Chanodorm Lertsuriyakul and Decho Phueakphum*

**Article Type:** Research Article

[View Abstract](#)
**No of Download** = 344

**Pages** (1-9)

### 2. LIQUEFACTION SIMULATION AND RELATED BEHAVIOR OF UNDERGROUND STRUCTURE ON OSAKA GULF COAST

*Keita Sugito, Tetsuya Okano and Ryoichi Fukagawa*

**Article Type:** Research Article

[View Abstract](#)
**No of Download** = 323

**Pages** (10-15)

### 3. ASSESSING THE IMPACT OF POSITIVE PRESSURE VENTILATION ON THE BUILDING FIRE – A CASE STUDY

*Rajmund Kuti, Geza Zolyomi and Orsolya K. Kegyes-Brassai*

**Article Type:** Research Article

[View Abstract](#)
**No of Download** = 312

**Pages** (16-21)

### 4. REINFORCEMENT EFFECT OF GEOGRID IN THE BALLAST AND SUB-BALLAST OF THE RAILWAY TRACK

*Saad Farhan Ibrahim, Ali Jabbar Kadhim and Harith Basim Khalaf*

**Article Type:** Research Article

[View Abstract](#)
**No of Download** = 299

**Pages** (22-27)

### 5. DETERMINATION OF THE APPROPRIATE IRRIGATION METHODS BASED ON SOIL ANALYSIS FOR UPLAND FIELDS IN MIE PREFECTURE OF JAPAN

*Abdul Saboor Rahmany, Hajime Narioka, Takamitsu Kajisa and Homayoon Ganji*

**Article Type:** Research Article

[View Abstract](#)
**No of Download** = 294

**Pages** (28-33)

### 6. REVIEW OF THE INFLUENCING FACTORS OF INTEGRATED WASTE MANAGEMENT

*Mohamad Satori, Erri N. Megantara, Ina Primiana F.M.S, Budhi Gunawan*

**Article Type:** Review Article

[View Abstract](#)
**No of Download** = 298

**Pages** (34-40)

### 7. DEVELOPMENT OF A PROFESSIONAL QUALIFICATION FOR CONSTRUCTION SURVEYORS IN THAILAND

*Supacha Siriwongyingcharoen, Sunchai Inthapichai and Narin Sridokmai*

**Article Type:** Research Article

[View Abstract](#)
**No of Download** = 279

**Pages** (41-47)

### 8. LESSONS AND ACHIEVEMENTS FROM THE MERSEY FOREST BY NETWORKING PARTNERSHIP FOR TWENTY YEARS

*Tomoko Miyagawa, Clare Olver, Noriko Otsuka, Takefumi Kurose and Hirokazu Abe*

**Article Type:** Research Article

[View Abstract](#)
**No of Download** = 266

**Pages** (48-54)

[Publication Ethics](#)
[Review Policy](#)
[Content List](#)
[Copyright, Template \(Form 1,2,3\)](#)
[Discussion](#)
[Erratum](#)
[Evaluation Form](#)
[Galley Proof Submission](#)
[Impact Factor by SCOPUS](#)
[Payment](#)
[Reviewer Application](#)
[Revised Paper Submission](#)



## 9. THE INFLUENCE OF THE JAKARTA BAY RECLAMATION ON THE SURROUNDING TIDAL ELEVATION AND TIDAL CURRENT

Harman Ajiwibowo and Munawir Bintang Pratama



**Article Type:** Research Article

[View Abstract](#)

**No of Download** = 258

**Pages** (55-65)

## 10. A REVIEW OF SELECTED UNEXPECTED LARGE SLOPE FAILURES

Marthinus Sonnekus and John Victor Smith



**Article Type:** Review Article

[View Abstract](#)

**No of Download** = 241

**Pages** (66-73)

## 11. RESPONSE OF DIODIA VIRGINIANA (RUBIACEAE) APPLIED TO DAM RESERVOIR SLOPES AS A COVER PLANT, JAPAN

Taizo Uchida, Yuya Imamura, Yoshifumi Kochi, Mamoru Yamada, Kunihiro Fukaura, Aki Matsumoto, Winarni S. Haller and Lyn A. Gettys



**Article Type:** Research Article

[View Abstract](#)

**No of Download** = 226

**Pages** (74-78)

## 12. MULTIPLE OBJECTIVE MANAGEMENT STRATEGIES FOR COASTAL AQUIFERS UTILIZING NEW SURROGATE MODELS

Alvin Lal and Bithin Datta



**Article Type:** Research Article

[View Abstract](#)

**No of Download** = 215

**Pages** (79-85)

## 13. CORRELATION AMONG THE SOIL PARAMETERS OF THE KARNAPHULI RIVER TUNNEL PROJECT

Khondoker Istiak Ahmad, Masnun Abrar, Sultan Al Shafian and Hossain Md. Shahin



**Article Type:** Research Article

[View Abstract](#)

**No of Download** = 200

**Pages** (86-90)

## 14. BEHAVIOR OF SEGMENTAL TUNNEL LININGS UNDER THE IMPACT OF EARTHQUAKES: A CASE STUDY FROM THE TUNNEL OF HANOI METRO SYSTEM

Gospodarikov Alexandr and Thanh Nguyen Chi



**Article Type:** Research Article

[View Abstract](#)

**No of Download** = 231

**Pages** (91-98)

## 15. INFLUENCE OF HEAT-AND-POWER ENTERPRISES ON THE HYDROSPHERE

Tatyana Germanovna Korotkova, Svyatoslav Andreevich Bushumov, Svetlana Dmitrievna Burlaka, Natalya Vladimirovna Istoshina and Hazret Ruslanovich Siukhov



**Article Type:** Research Article

[View Abstract](#)

**No of Download** = 252

**Pages** (99-106)

## 16. PORTLAND CEMENT CONTAINING FLY ASH, EXPANDED PERLITE, AND PLASTICIZER FOR MASONRY AND PLASTERING MORTARS

Satakhun Detphan, Tanakorn Phoo-ngernkham, Vanchai Sata, Chudapak Detphan and Prinya Chindaprasit



**Article Type:** Research Article

[View Abstract](#)

**No of Download** = 256

**Pages** (107-113)

## 17. APPLICATION OF SWAN MODEL FOR HINDCASTING WAVE HEIGHT IN JEPARA COASTAL WATERS, NORTH JAVA, INDONESIA

Yati Muliati, Ricky Lukman Tawekal, Andojo Wurjanto, Jaya Kelvin, and Widodo Setiyo Pranowo,



**Article Type:** Research Article

[View Abstract](#)

**No of Download** = 268

**Pages** (114-120)

## 18. CO-BENEFIT ASSESSMENT OF LOGISTICS OPTIMIZATION PROGRAMS: THE CASE OF THE PHILIPPINE GREATER CAPITAL REGION



**Article Type:** Research Article[View Abstract](#)**No of Download** = 274**Pages** (121-128)**19. CHARACTERIZATION OF RECYCLED AGGREGATE FOR USE AS BASE COURSE MATERIAL***Kongrat Nokkaew***Article Type:** Research Article[View Abstract](#)**No of Download** = 285**Pages** (129-136)**20. PHYSICAL MODELING OF PROPOSED POROUS DRAINAGE SYSTEM TO SOLVE INUNDATION PROBLEM***Ahmad Rifa and Noriyuki Yasufuku***Article Type:** Research Article[View Abstract](#)**No of Download** = 297**Pages** (137-142)**21. REMOVAL OF COPPER IONS FROM AQUEOUS SOLUTION USING PALM SHELL CHARCOAL ACTIVATED BY NAOH***Muhammad Faisal and Asri Gani, Abubakar***Article Type:** Research Article[View Abstract](#)**No of Download** = 309**Pages** (143-147)**22. EARTHQUAKE MICROZONATION STUDY ON BATUBESI DAM OF NUHA, EAST LUWU, SOUTH SULAWESI, INDONESIA***Sunaryo, Harti Uumbu Mala, and Anom Prasetio***Article Type:** Research Article[View Abstract](#)**No of Download** = 322**Pages** (148-154)**23. THE CARBON FOOTPRINT OF NATURAL GAS AND ITS ROLE IN THE CARBON FOOTPRINT OF ENERGY PRODUCTION***Oleg E. Aksyutin, Alexander G. Ishkov, Konstantin V. Romanov, Vladimir A. Grachev***Article Type:** Research Article[View Abstract](#)**No of Download** = 332**Pages** (155-160)**24. PRELIMINARY STUDY OF LANDSLIDE IN SRI MULYO, MALANG, INDONESIA USING RESISTIVITY METHOD AND DRILLING CORE DATA***Adi Susilo, Eko Andi Suryo, Fina Fitriah, Muwardi Sutasoma and Bahtiar***Article Type:** Research Article[View Abstract](#)**No of Download** = 371**Pages** (161-168)**25. COMPRESSIVE STRENGTH MODELLING OF CONCRETE MIXED WITH FLY ASH AND WASTE CERAMICS USING k-NEAREST NEIGHBOR ALGORITHM***Kenneth Jae T. Elevado, Joenel G. Galupino and Ronaldo S. Gallardo***Article Type:** Research Article[View Abstract](#)**No of Download** = 355**Pages** (169-174)**26. STABILIZATION OF SANDY SOIL USING RECYCLE WASTE TIRE CHIPS***Mohammed Abdullateef Al-Neami***Article Type:** Research Article[View Abstract](#)**No of Download** = 339**Pages** (175-180)**27. THE CHANGES OF ENVIRONMENT AND AQUATIC ORGANISM BIODIVERSITY IN EAST COAST OF SIDOARJO DUE TO LAPINDO HOT MUD***Tarzan Purnomo and Fida Rachmadiarti***Article Type:** Research Article[View Abstract](#)**No of Download** = 285**Pages** (181-186)

---

## 28. ASSESSING URBAN WATER SUPPLY SYSTEM IN NORTHEASTERN THAILAND: WATER QUALITY AND AUTHORITY ORGANIZATION

*Jareeya Yimrattanabavorn, Oranee Rungrueang, Sudjit Karuchit and Pensupa Wirikitkhul*



**Article Type:** Research Article

[View Abstract](#)

**No of Download** = 227

**Pages** (187-194)

---

## 29. STABILITY CHART FOR UNSUPPORTED SQUARE TUNNELS IN HOMOGENEOUS UNDRAINED CLAY

*Jim Shiau, Mohammad Mirza Hassan and Zakaria Hossain*



**Article Type:** Research Article

[View Abstract](#)

**No of Download** = 208

**Pages** (195-201)

## APPLICATION OF SWAN MODEL FOR HINDCASTING WAVE HEIGHT IN JEPARA COASTAL WATERS, NORTH JAVA, INDONESIA

\*Yati Muliati<sup>1,2</sup>, Ricky Lukman Tawekal<sup>1</sup>, Andoyo Wurjanto<sup>1</sup>, Jaya Kelvin<sup>3</sup>, and Widodo Setiyo Pranowo<sup>3,4</sup>

<sup>1</sup>Faculty of Civil and Environmental Engineering, Institut Teknologi Bandung, Indonesia,

<sup>2</sup>Faculty of Civil Engineering and Planning, Institut Teknologi Nasional (Itenas) Bandung, Indonesia,

<sup>3</sup>Marine Research Center, Indonesian Ministry of Marine Affairs & Fisheries,

<sup>4</sup>Department of Tech. Hydrography, Naval Postgraduate School (STTAL).

\*Corresponding Author, Received: 26 Feb. 2018, Revised: 19 Mar. 2018, Accepted: 19 Apr. 2018

**ABSTRACT:** SWAN (Simulating Wave Near-shore) is a numerical wave model for hindcasting/forecasting wave parameters in coastal areas. This numerical model is chosen because is suitable for shallow water. This study was conducted to verify the results of wave height hindcasting in Jepara coastal waters. This is expected to support wave characteristic research based on wave forecasting for 10 years in the waters between Java, Sumatera and Kalimantan. The model is run with the third-generation mode (GEN3), which allow wind input, quadruplet and triad interactions, whitecapping, and breaking. Wind data is obtained from ECMWF (European Centre for Medium-Range Weather Forecasts) and the bathymetry from GEBCO (General Bathymetric Chart of The Oceans). The validation of the model and buoy data during July - December 1993 shows a good result (Root Mean Square Error = 0.166 and correlation/ linear regression = 0.807). Based on the literature, qualitatively the model has been verified with other simulation from another model in the same location.

*Keywords: SWAN Model, Hindcasting, Jepara Coastal Waters, Significant Wave Height, Validation*

### 1. INTRODUCTION

Considering the difficulty to obtain waveform measurement data in Indonesia, wind wave hindcasting was often used in onshore and offshore building planning. There is a significant difference between measurement results and forecasting [1], so it needs to be verified with the measurement results.

The purpose of this study is to find whether the SWAN set up give results in accordance with the measurement results in Jepara coastal waters. This study was conducted to support the research of wave characteristics based on wave forecasting for 10 years in the waters between Java, Sumatera and Kalimantan using SWAN model from TU Delft (Delft University of Technology).

SWAN (Simulating Wave Near-shore) is a numerical wave model for hindcasting wave parameters in coastal areas. This numerical model was chosen because the reference is suitable for shallow water. Shallow water has many nonlinear factors that affect the wave greatly. In addition, this model can be accessed directly without the need to pay licenses and has been used widely by researchers in various countries. SWAN is now a viable option for operational high-resolution nonstationary wave predictions at sub-regional scale [2]. It is relatively quick to set up and user-friendly in operation, but some terms should be improved and not all interactions are included (e.g.

bottom friction). It is expensive in terms of computer time. Running long time series on a PC is prohibitive [3]. Besides that, the difference in density gives very significance effect to the relative wave amplitude [4].

This research is concerned the development of a methodology for nesting from ocean to local scale using SWAN, where waves are first simulated for a larger area using a coarse grid and then downscaled to a finer grid covering a smaller area. The boundary conditions for the finer grid are derived from the coarse grid computation. There are several nesting techniques that can be implemented to produce a high-resolution local scale model. One common difference in techniques is the source of the boundary data for the coarse model. The most holistic approach is to nest from a global domain to a regional/sub-oceanic domain and, lastly, to a local coastal domain [5].

Gorman et.al [6] show the simulations were validated using data from an inshore site in 30 m water depth at Mangawhai on the north-east coast of the North Island. Use of the nested model improved the agreement between model and measured significant wave height, decreasing the scatter index from 0.50 to 0.26. The suite of tools provided by the hindcast and localized, shallow water models can provide accurate new wave information for most of New Zealand's coastline.

## 2. PHYSICAL PROCESSES

All information about the sea surface is contained in the wave variance spectrum or energy density  $E(\sigma, \theta)$ , distributing wave energy over (radian) frequencies  $\sigma$  (as observed in a frame of reference moving with current velocity) and propagation directions  $\theta$  (the direction normal to the wave crest of each spectral component). Usually, wave models determine the evolution of the action density  $N(x, t; \sigma, \theta)$  in space  $x$  and time  $t$ . The action density is defined as  $N = E/\sigma$  and is conserved during propagation in the presence of ambient current, whereas energy density  $E$  is not. It is assumed that the ambient current is uniform with respect to the vertical co-ordinate and is denoted as  $U$  [7].

The evolution of the action density  $N$  is governed by the action balance equation, which reads [8]:

$$\frac{\partial N}{\partial t} + \nabla_x [(c_g + U)N] + \frac{\partial c_\sigma N}{\partial \sigma} + \frac{\partial c_\theta N}{\partial \theta} = \frac{S_{tot}}{\sigma} \quad (1)$$

The left-hand side is the kinematic part of this equation. The second term denotes the propagation of wave energy in two-dimensional geographical  $x$ -space, with the group velocity  $c_g = \partial \sigma / \partial k$  following from the dispersion relation  $\sigma^2 = g|k| \tanh(|k|d)$  where  $k$  is the wave number vector and  $d$  the water depth. The third term represents the effect of shifting of the radian frequency due to variations in depth and mean currents. The fourth term represents depth-induced and current-induced refraction. The quantities  $c_\sigma$  and  $c_\theta$  are the propagation velocities in spectral space  $(\sigma, \theta)$ . The right-hand side contains  $S_{tot}$ , which is the source/sink term that represents all physical processes which generate, dissipate, or redistribute wave energy. They are defined for energy density  $E(\sigma, \theta)$ . The second term in Eq. (1) can be recast in Cartesian, spherical or curvilinear co-ordinates. For small-scale applications, the spectral action balance equation may be expressed in Cartesian co-ordinates as given by [7]

$$\frac{\partial N}{\partial t} + \frac{\partial c_x N}{\partial x} + \frac{\partial c_y N}{\partial y} + \frac{\partial c_\sigma N}{\partial \sigma} + \frac{\partial c_\theta N}{\partial \theta} = \frac{S_{tot}}{\sigma} \quad (2)$$

with

$$c_x = c_{g,x} + U_x, \quad c_y = c_{g,y} + U_y \quad (3)$$

With respect to applications at shelf sea or oceanic scales the action balance equation may be recast in spherical co-ordinates as follows [7]:

$$\frac{\partial N}{\partial t} + \frac{\partial c_x N}{\partial x} + \frac{\partial c_y N}{\partial y} + \frac{\partial c_\sigma N}{\partial \sigma} + \frac{\partial c_\theta N}{\partial \theta} = \frac{S_{tot}}{\sigma} \quad (4)$$

with longitude  $\lambda$  and latitude  $\phi$  [7].

In shallow water, six processes contribute to  $S_{tot}$ :

$$S_{tot} = S_{in} + S_{nl3} + S_{nl4} + S_{ds,w} + S_{ds,b} + S_{ds,br} \quad (5)$$

These terms denote, respectively, wave growth by the wind, nonlinear transfer of wave energy through three-wave and four-wave interactions and wave decay due to whitecapping, bottom friction and depth-induced wave breaking [7].

There are some options in SWAN regarding the model set-up which pertains to the type and/or parameterization of the formulations used for the source terms in Eq.(5). The user can choose between three different formulations for  $S_{in}$ , which accounts for the linear and exponential growth of waves due to wind [5].

Wind energy to waves is commonly described as the sum of linear and exponential growth. There are two wind growth models in SWAN that are available for us. Both expressions of wind growth model of them share the following form (Eq.(6)) and the same linear growth (Eq.(7)), while the exponential growth term is different.

$$S_{in}(\sigma, \theta) = A + BxE(\sigma, \theta) \quad (6)$$

In which  $A$  describes linear growth and  $BxE$  exponential growth [9].

Linear growth by wind:

$$A = \frac{\alpha}{g^2 2\pi} [U_* \max(0, \cos(\theta - \theta_w))]^4 H \quad (7)$$

with

$$H = \exp(-(\sigma/\sigma_{PM}^*)^4) \quad \text{and} \quad \sigma_{PM}^* = \frac{0.13g}{28U_*} 2\pi \quad (8)$$

Exponential growth:

a. Expression from [10]:

$$B = \max[0, 0.25 \frac{\rho_a}{\rho_w} \left( 28 \frac{U_*}{C_{ph}} \cos(\theta - \theta_w) - 1 \right)] \sigma \quad (9)$$

in which  $U_*$  is friction velocity,  $\theta_w$  is wind direction,  $C_{ph}$  is the phase speed and  $\rho_a$  and  $\rho_w$  are the density of air and water, respectively.

b. Expression from [11]:

$$B = \beta \frac{\rho_a}{\rho_w} \left( \frac{U_*}{C_{ph}} \right)^2 (\max(0, \cos(\theta - \theta_w)))^2 \sigma \quad (10)$$

where  $\beta$  is the Miles“constant”.

The dissipation term of wave energy is represented by the summation of three different contributions: white-capping  $S_{ds,w}$ , bottom friction  $S_{ds,b}$  and depth-induced breaking  $S_{ds,br}$  [7].

### 3. MATERIALS AND METHODS

#### 3.1 Available Data

The scarcity of time series oceanographic datasets, especially the observational wave data, is one of the challenges to develop the ocean model in Indonesia. However, data is obtained from long-term wave observation located in Jepara, Central Java (110.7722°E, 6.3983°S), which has granted the access from PT. Geomarindex. The data is from July to December 1993 with three-hour temporal resolution. The available parameter is only the wave height values.

The bathymetry data is obtained from General Bathymetric Chart of the Oceans (GEBCO) with a spatial resolution of 30 arc-sec (~1 km). There is no available local bathymetry dataset to cover the coastal waters. Therefore, it is applied to all model domains. The only forcing included in this wave model is from the wind. It is obtained from the European Centre for Medium-Range Weather Forecasts (ECMWF) with a spatial resolution of 0.125 degrees (~13.75 km) and 6-hour temporal resolution. The FNMOC global WW3 model is vastly used for open boundary condition of wave forcing in several studies, e.g. [5], however, wave data in 1993 is unavailable.

The significant wave height output from the ECMWF reanalysis (ERA)-Interim reanalysis is used as a comparison to our model. The nearest point to the buoy station is located at 110.75°E and 6.375°S. The distance between these two points is 4.16 km or 4 grid cells in the smallest domain.

#### 3.2 Model Domain

The SWAN model provides nesting application to the parent grid. Hence, there is two model domains, the Java Sea (JS) domain as the parent grid and Jepara Coastal Waters (JCW) domain as the child/nested grid (Fig. 1). The JS domain extends from Aceh to Bali that includes two marginal seas, i.e. the South China Sea and the Java Sea, while the JCW domain covers the Jepara coastal waters

(110.450°E-110.918°E and 5.996°S - 6.450°S). The JS and JCW domains have 1/8 degree and 1/96 grid resolutions with the total of 176x120 and 44x48 grid-cells, respectively.

The bathymetry in this region is relatively shallow (<100 m), with the presence of narrow straits (e.g. Malacca Strait) and small islands that add the complexity of the model domain (Fig. 1). The deep waters are concentrated in the edge of model domain, i.e. North of Sumatera (top-left), North of Kalimantan (top-right), and North of Bali (bottom-right). The depth range is 500-3300 m.

#### 3.3 Model Setup

The non-stationary 2D wave model within SWAN is simulated with 1-hour interval from July to December 1993. The frequency range is set at 0.3-1.1 Hz and divided linearly into 38 frequencies. The number of directional bins is set for 72 due to the physical characteristics of the study areas, such as the geographical conditions, bathymetry gradients, and global and local wind effects [12]. In addition, the first order, backward space, backward time (BSBT) numerical scheme are employed for both model domains with three maximum number of iterations and 98% percentage of accuracy for the wet/dry condition.

The same physics setup is applied to both domains. GEN3 wave model with Komen linear growth formulation and the white capping default configurations were used [10]. Further, the triad and quad wave-wave interaction, as well as breaking and diffraction processes are activated by using the default configurations [7]. For bed friction, the dissipation coefficients ( $C_b$ ) was 0.019 as suggested for the region with smooth sediment characteristic, while the default value was 0.038 [7]. The vegetation, turbulence, and fluid mud are omitted in the physical processes due to the absence of datasets. Finally, the model is simulated in parallel computing with OpenMP (Open Multi-Processing) to reduce computation times.

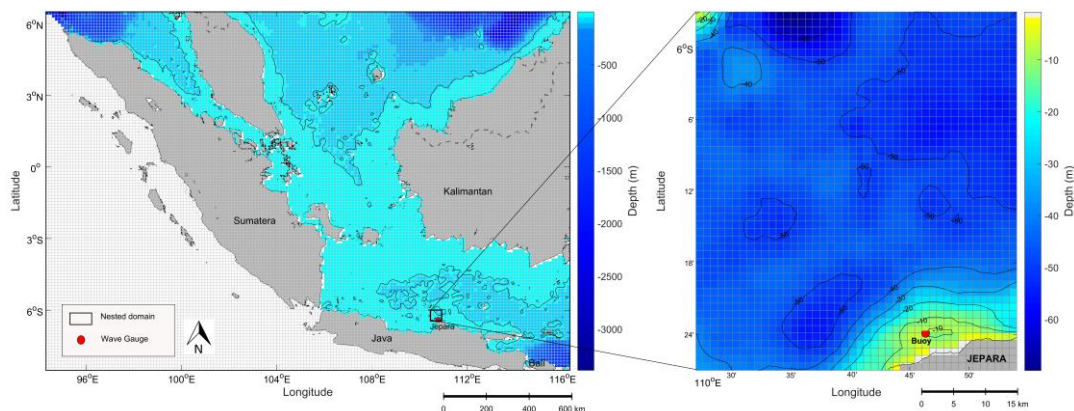


Fig.1 Grid-view of wave model domains; (left) JS domain with isobath at 50 m and (right) JCW domain with 10 m of isobath interval. Red point denotes a buoy location.



## 4. RESULTS AND DISCUSSION

### 4.1 Model Validation

Wave statistics for the buoy sites were computed from the hindcast. Occurrence statistics for significant wave height  $H_s$ , mean direction  $Q_{mem}$ , and second moment mean period  $T_{m2}$  were computed. Significant wave height results were compared with data over the relevant deployment periods.

Significant wave height at a wave buoy site as simulated by the wave model and as measured by the buoy, shown as time series in Fig.2a and regression in Fig.2c, with the line of best fit and equivalence lines shown by dashed and solid lines respectively.

In December 1993, there appeared to be extreme wave height (see Fig.2b) and after further study of the cause, this was due to Manny typhoon where propagation of waves from the center of the cyclone

Manny to Jepara occurred over 10 days (see Fig.2d).

The result of forecasting with SWAN shows a wave distribution pattern corresponding to the buoy data, except for the duration of Oct-Nov 1993 for which the wave height of the measurement needs to be reconfirmed.

Factors that may affect the inaccuracy of the model:

1. Coarse resolution of bathymetry dataset used in this model
2. Global wind data are usually unable to achieve the magnitude of extreme events
3. The absence of wave-current interaction in the model and static water level (zero value)
4. The grid on the model is also still rough and in rectangular form
5. The accuracy of the buoy data for validation also needs to be confirmed again, especially the Oct-Nov 1993 timeframe, because the wave height was only about 10-15 cm.

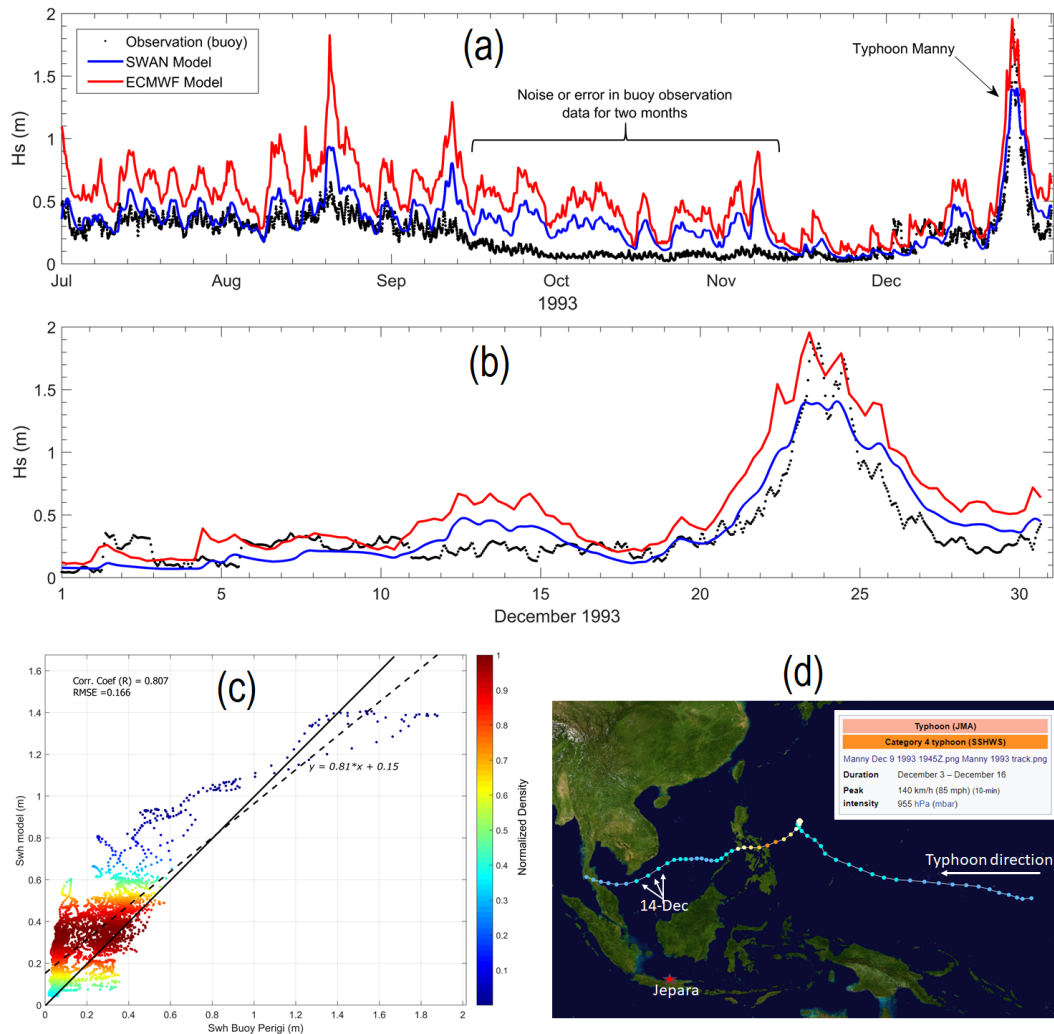


Fig.2 (a) and (b) are showing time-series of significant wave height from SWAN model (blue line), ECMWF model (red line) and buoy observation (black dots) for whole observation period and during Typhoon Manny, respectively. (c)  $H_s$  density plot of SWAN & Jepara Buoy, and (d) Typhoon Manny propagation track that obtained from Joint Typhoon Warning Center (JTWC) and plotted in Google Earth.

**Table 1.** Significant wave height ( $H_s$ ) statistic in the Jepara Buoy station and the model accuracy.  $R$  is correlation coefficient and SI is scattered index.

Data	Basic Stats				Model Accuracy			
	Min	Max	Mean	Std	RMSE	$R$	Bias	SI
Jepara Buoy	0.017	1.878	0.230	0.202	x	x	x	x
SWAN	0.041	1.406	0.339	0.203	0.166	0.807	-0.109	0.720
ECMWF*	0.071	1.955	0.535	0.288	0.354	0.778	-0.304	1.535

\* Significant wave height output from the ECMWF (European Centre for Medium-Range Weather Forecasts) reanalysis (ERA)-Interim reanalysis

#### 4.2 Comparison with Existing Models

The European Centre for Medium-Range Weather Forecasts (ECMWF) is an independent intergovernmental organization supported by 34 states. ECMWF is both a research institute and a 24/7 operational service, producing and disseminating numerical weather predictions to its Member States. This data is fully available to the national meteorological services in the Member States [13].

The result of SWAN modeling is compared with the wave forecasting result from ECMWF as shown in Fig 2a and 2b. Both models exhibit similar wave distribution patterns, although  $H_s$  ECMWF model results tend to be always larger than the  $H_s$  model of SWAN.

Statistical analysis for  $H_s$  model and  $H_s$  buoy included minimum, maximum, mean, standard deviation and model accuracy values against the measurement results are presented in Table 1 where the  $H_s$  model SWAN (0.807) showed a better correlation value than  $H_s$  ECMWF (0.778). Root Mean Square Error (RMSE) for  $H_s$  SWAN is smaller than  $H_s$  ECMWF. This shows the SWAN modeling more closely to the measurement results, in other words, the SWAN model setting is good.

#### 4.3 Monsoonal Significant Wave Characteristics

Examples of the significant wave ( $H_s$ ) and wind pattern models in east monsoon and west monsoon are presented in Fig.3, both also show normal conditions and extreme wave (typhoon) condition.

Wind patterns during east and west monsoon are distinctly recognized based on its direction. The east monsoon winds travel from southeast to northwest, while the west monsoon winds are the opposites. The east monsoon wind or Australian monsoon wind blows from Australia to the equator and is known as the dry season that peaks in June-July-August. The west monsoon wind or Asian monsoon wind blows from the Asian continent with water vapors that cause rain, so it is called the rainy season and reaches its peak in December-January-February. Wind data treated in accordance with

both monsoon wind patterns and can be seen in Fig. 3a and 3b (right).

In normal condition as depicted in Fig. 3a and 3b,  $H_s$  is strongly associated with the wind pattern. Although, occasionally there are cyclones coming from Indian Ocean (south of Java) or typhoon in the South China Sea region and causing a disturbance within model domains for up to 15 days. One of the examples is the Typhoon Manny, which was originated in the Western Pacific. Fig. 3c shows the generation of typhoon within model domains and it has significantly amplified the wave height.

In normal conditions, the wind speed 5-7 m/s produces  $H_s$  0.5-1.2 meter (Fig. 3a and 3b), while at maximum  $H_s$  condition between July-December 1993, wind speed 8-15 m/s yield  $H_s$  1-3 meters (Fig.3d).The relative maximum  $H_s$  in the model domain reaches 3.16 m. It is located in the south of Kalimantan (see Fig. 3d). Meanwhile, in Jepara coastal waters, the increasing maximum  $H_s$  is up to 1.41 m.

The results of statistical calculations for the four areas in the study area obtained the  $H_s$  min-max and average  $H_s$  (meter) in the east monsoon conditions for the Java Sea 0.43-0.99 (average 0.64) Karimata Strait 0.18- 0.98 (0.51), Malacca Strait 0.02-0.58 (0.24), South China Sea 0.09-1.21 (0.47) and for the west monsoon; Java Sea 0.08-2.44 (average 0.57) Karimata Strait 0.09-2.09 (0.56), Malacca Strait 0.07-0.77 (0.28), South China Sea 0.21-2.93 (0.97).

This results are suitable when compared to  $H_s$  for 9 years forecasting by Wicaksana et.al (2015) [14] where at the west monsoon in Karimata Strait of  $H_s$  1.5-3 m ( $H_s$  SWAN 2.09 m) and Java Sea 0.5-2.5 m ( $H_s$  SWAN 2.44 m), while at the east monsoon in Karimata Strait  $H_s$  1.5-2.5 m ( $H_s$  SWAN 0.98 m) and Java Sea 1-2 m ( $H_s$  SWAN 0.99 m). Suitable in question is data analysis results for 6 months entered in the range of 9-year forecasting results.

#### 4.4 Future Works Application

This study is expected to support wave characteristic research based on wave forecasting for 10 years in the waters between Java, Sumatera and Kalimantan. The wave forecasting research needed 10-year wind data (2007 - 2016) from



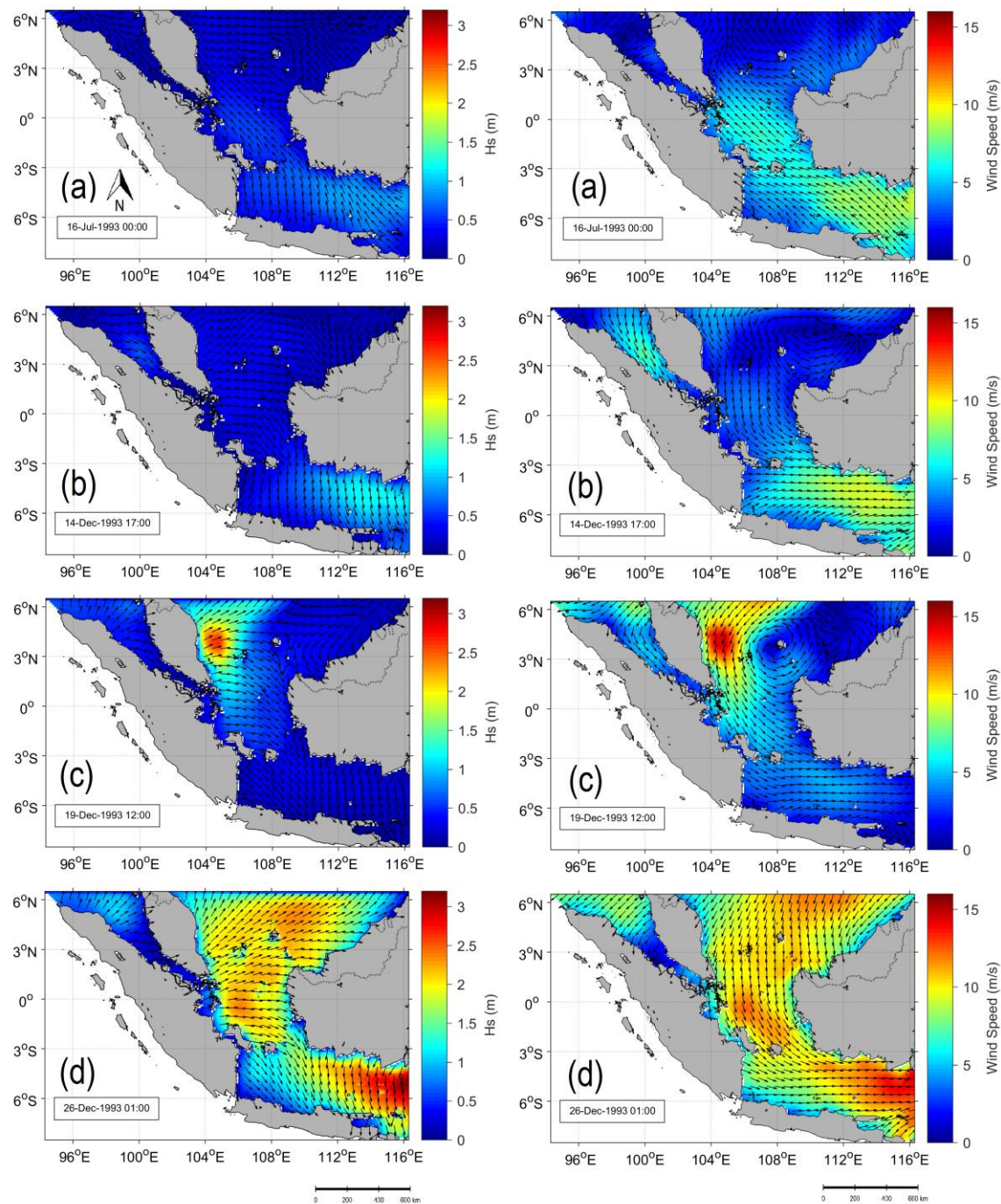


Fig. 3 Significant wave height with directional spreading (left) and wind speed (right) within the large model domain in different conditions: (a) east monsoon, (b) west monsoon, (c) typhoon Manny generation, and (d) relative maximum Hs for the period of July to December 1993.

ECMWF and bathymetry data from GEBCO where both data use the same resolution used in this study.

The results of the research are expected to help practitioners to plan the structure of the beach building, coastal protection, the structure of the building at sea, or marine structures. For example, as mentioned by Rathod et.al [15]; Piles used in marine structures are subjected to lateral loads from the impact of berthing ships and from waves. Piles used to support retaining walls, bridge piers and

abutments, and machinery foundations carry combinations of vertical and horizontal loads.

The 10-year wave data can be used as a basis to determine the probability of 25, 50, or even 100 years in the future. The use of significant wave heights with specific return periods is associated with the risk of planned building structures. The higher the risk value the longer return period is chosen.

Significant wave forecasting is also required for shipping safety. Until now the Karimata Strait (between south Sumatera and Kalimantan Island) is still a trading channel and the Java Sea becomes one of the important national service channels, especially in the present role in the Indonesian toll lane [14].

## 5. CONCLUSION

The result of forecasting with SWAN shows a wave distribution pattern corresponding to the buoy data, except for the duration of Oct-Nov 1993 for which the wave height of the measurement needs to be reconfirmed.

Refers to the Root Mean Square Error (RMSE) value (0,166) and correlation/ linear regression value (0,807), and the waveform pattern corresponding to the monsoon pattern, it can be stated that this SWAN model is valid.

The setting up of wave hindcast for Jepara waters will be helpful for improving the level of shallow sea wave hindcast in the waters between Java, Sumatera, and Kalimantan.

## 6. ACKNOWLEDGEMENTS

The authors would like to thank PT. Geomarindex/PT. Wiratman & Associates for providing observation wave data and also thank the ECMWF and GBCO for providing access to wind and bathymetry data.

Sincere gratitude to scientists at Delft University of Technology (TU Delft) who developed the SWAN model and special thanks to the Marine and Coastal Data Laboratory, Indonesian Ministry of Marine Affairs & Fisheries for providing places of simulations.

## 7. REFERENCES

- [1] Muliati Y., Wurjanto A., and Pranowo W.S., Validation of Altimeter Significant Wave Height Using Wave Gauge Measurement in Pacitan Coastal Waters, East Java, Indonesia, *International Journal of Advances in Engineering Research*, Vol. 2, Issue No. IV, 2016, pp. 25-33.
- [2] Rogers W., Kaihatu J.M., Hsu L., Jensen R.E., Dykes J.D., and Holland K.T., Forecasting and Hindcasting Waves with the SWAN Model in the Southern California Bight, *Coastal Engineering*, Vol. 54, Issue 1, 2007, pp. 1-15
- [3] Wolf J., Hargreaves J.C., Flather R.A., Application of The SWAN Shallow Water Wave Model to Some U.K. Coastal Sites. Proudman Oceanographic Laboratory Report, NO 57, 51PP, 2000, pp.ii-48.
- [4] Harun F.N. and Khairuddin M.A.A., Analytical Solution For a Long Waves Propagation in Two-Layer Fluid Over a Submerged Hump, *International Journal of GEOMATE*, Vol. 12, Issue 33, 2017, pp. 30-37.
- [5] Atan R., Nash S., and Goggins J., Development of a Nested Local Scale Wave Model for a 1/4 Scale Wave Energy Test Site Using SWAN, *Journal of Operational Oceanography*, 2017, pp.1-20.
- [6] Gorman R.M., Bryan K.R., and Laing A.K., Wave hindcast for the New Zealand region: Nearshore validation and coastal wave climate, *New Zealand Journal of Marine and Freshwater Research*, Vol.37, Issue 3, 2003, pp. 567-588.
- [7] The SWAN team, SWAN Technical Documentation, Delft University of Technology, 2006, pp. 11-27.
- [8] Komen G.J., Cavaleri L., Donelan M., Hasselmann K., Hasselmann S. and P.A.E.M. Janssen, *Dynamics and Modelling of Ocean Waves*, Cambridge Univ. Press, 1994, pp. 532.
- [9] Baoshu Y., Dezhou Y., Application Study of Shallow Water Wave Model (SWAN) in Bohai Sea, *Proceedings of The Twelfth OMISAR Workshop on Ocean Models*, 2004, pp. 3-1-3-8.
- [10] Komen G.J., Hasselmann S., and Hasselmann K., On the Existence of a Fully Developed Windsea Spectrum, *Journal of Physical Oceanography*, 14, 1984, pp.1271-1285.
- [11] Janssen P.A.E.M., Quasi-linear Theory of Wind-wave generation applied to Wave Forecasting, *Journal of Physical Oceanography*, 21, 1991, pp.1631-1641.
- [12] WMO, Guide to wave analysis and forecasting, Second ed, Geneva, Switzerland: Secretariat of the World Meteorological Organization (WMO), 1998.
- [13] ECMWF, Who We Are, [www.ecmwf.int/en/about](http://www.ecmwf.int/en/about), 2018.
- [14] Wicaksana S., Sofian I., Pranowo W.S., Kuswardani A.R.T.D., Saroso, Sukoco, N.B., Karakteristik Gelombang Signifikan di Selat Karimata dan Laut Jawa Berdasarkan Rerata Angin 9 Tahunan (2005-2013), *Omni Akuatika*, Vol.11, Issue 2, 2015, pp.33-40.
- [15] Rathod D., Muthukkumaran K., Sitharam T.G., Dynamic Response of Single Pile Located In Soft Clay Underlay by Sand, *International Journal of GEOMATE*, Vol. 11, Issue 26, 2016, pp. 2563-2567.

---

Copyright © Int. J. of GEOMATE. All rights reserved, including the making of copies unless permission is obtained from the copyright proprietors.

---